



DeLonghi Steel Radiator

The Steel Panel Radiator by DeLonghi

We supply DeLonghi's Steel Panel radiators as they are efficient, versatile, stylish, silent and durable. All DeLonghi radiators come with a 25-year warranty.

Available Models

DeLonghi's steel paneled radiators are available in three types: Type 21, which is 66mm thick; and Type 22, which is 100mm thick. They are available in sizes ranging from 400 to 2300mm wide and 300 to 900mm high. These types and sizes affect the amount of heat that the radiator puts out. Our system design engineers will determine the radiator types and sizes required to heat your home.



- 25-year warranty
- Integral thermostatic valve and bottom pipe entry
- F7 Easyfit brackets included
- Radiant heat with no forced air movement
- Quick response time (around 10 minutes to warm up)
- Variety of styles; endless colour options



Quality

During the many years of production experience, the moulding, welding, assembly and thanks to the high quality standards and the implementation of automated control systems, DeLonghi Radiators comes with a 25-year warranty.

Packaging

DeLonghi steel panel radiators are packed with plastic corner protection and tough cardboard strips to protect the edges from knocks during transport, then finished with heat shrink tape to protect from damp.

Painting

The top quality painted finish of DeLonghi steel panel radiators is achieved by an industrial process originating in the automotive sector to give each element a glossy long-lasting colour. Steel panel radiators are painted using a three-phase system:

- Hot degreasing and basic hot iron phosphatisation
- Electrophoretic dip coating to apply the base colour evenly in the innermost and outermost parts of the panel, followed by baking at 185°C
- Epoxy powder coating and baking at 170°C to give the panel a bright glossy finish
- The colour is DeLonghi Radiators's characteristic RAL 9016 white

Technical Characteristics

- Working pressure 10 bar
- Test pressure 13 bar
- Maximum operating temperature 110°C

Standard Equipment

- Bottom connector 50mm tappings centre, 3/4" outside thread
- 3 x 1/2" connections, inside thread;
- 2 x 1/2" blind caps provided, to be mounted
- 1 x 1/2" vent plug provided, to be mounted
- Top grid
- Side covers
- F7 brackets for type 21 and 22, no welded rear supports

Reversibility

The models 21 and 22 are symmetric so the steel panel is reversible at 180° and can be installed with the left side valve.

These types have no welded back supports and can therefore be mounted with the F7 quick-fit brackets provided.

Connection

Panels can be connected to either a one-pipe with a 50mm tappings centre distributor, or two-pipe installation. See connection options.

For connection to both two-pipe and one-pipe installations, a distributor is required and must be specifically ordered.

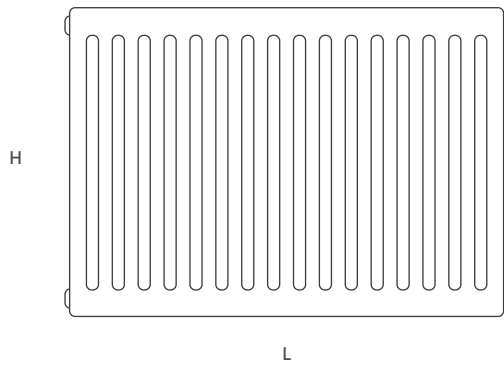
Safety

The side panels with central connection are fastened with screws, safer than the interlocking system adopted on other panel radiators; both sides have two openings for the connections.

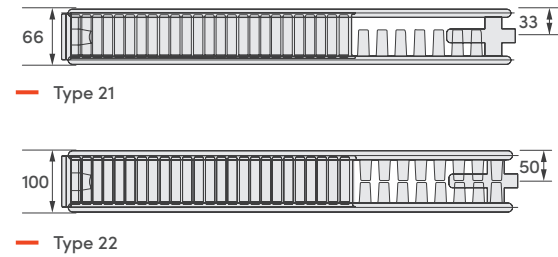
Optional accessories

- Thermostatic insert (provided separately)
- Thermostatic head
- Valve block

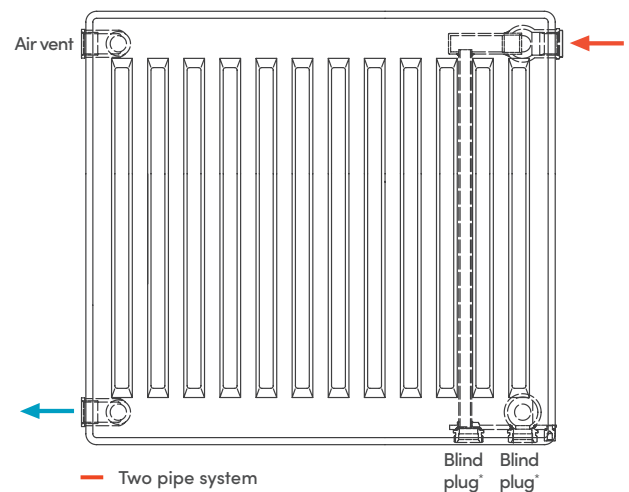
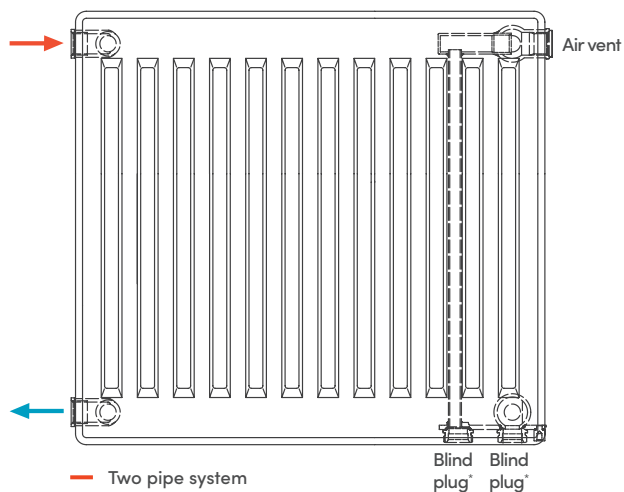
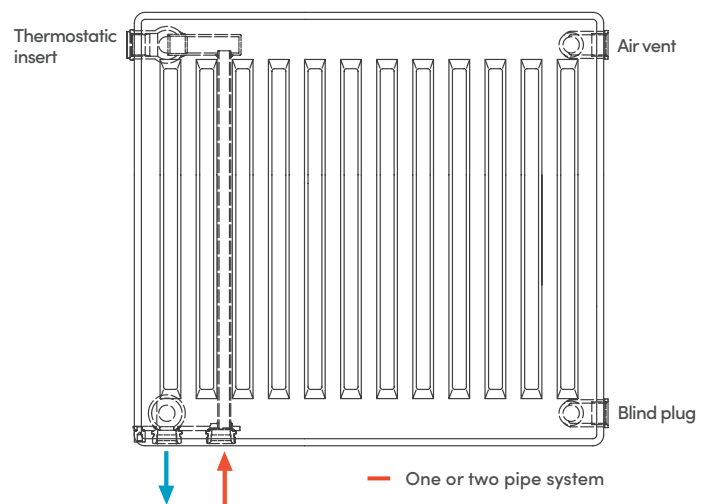
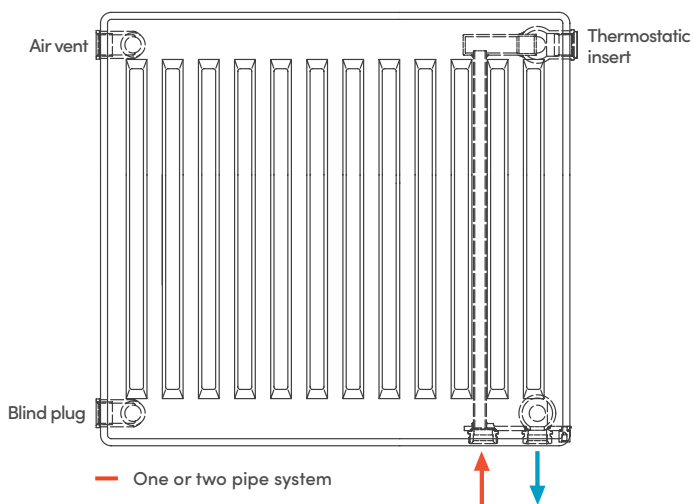
Front view



Top view



Connection Options



*Plastic pre-mounted caps must be removed and replaced with metallic 3/4 caps not supplied

Type 21

Product Code	Dimensions	Output	Weight
DLP213400	300 x 400	316W	6.19kg
DLP214600	400 x 600	601W	12.24kg
DLP214800	400 x 800	801W	16.32kg
DLP2141000	400 x 1000	1001W	20.40kg
DLP2141200	400 x 1200	1201W	24.48kg
DLP216400	600 x 400	561W	12.04kg
DLP216600	600 x 600	841W	18.07kg
DLP216800	600 x 800	1122W	24.09kg
DLP2161000	600 x 1000	1402W	30.11kg
DLP2161200	600 x 1200	1683W	36.13kg
DLP2161600	600 x 1600	2244W	48.18kg

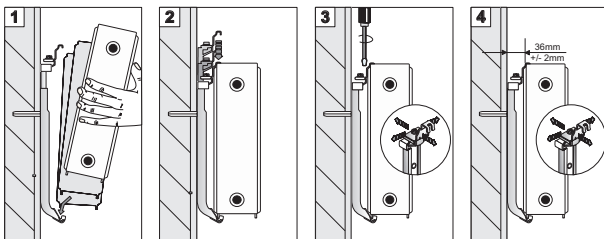
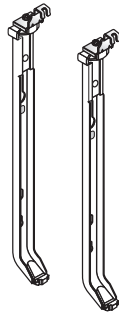
Type 22

Product Code	Dimensions	Output	Weight
DLP2231000	300 x 1000	998W	17.06kg
DLP2231200	300 x 1200	1197W	20.47kg
DLP2231400	300 x 1400	1397W	23.88kg
DLP2231600	300 x 1600	1596W	27.30kg
DLP2231800	300 x 1800	1796W	30.71kg
DLP2241000	400 x 1000	1245W	22.52kg
DLP2241200	400 x 1200	1494W	27.02kg
DLP2241400	400 x 1400	1743W	31.53kg
DLP2241600	400 x 1600	1992W	36.03kg
DLP2241800	400 x 1800	2241W	40.54kg
DLP2242000	400 x 2000	2490W	45.04kg
DLP2242300	400 x 2300	2864W	51.79kg
DLP226400	600 x 400	688W	13.56kg
DLP226600	600 x 600	1032W	20.33kg
DLP226800	600 x 800	1376W	27.11kg
DLP2261000	600 x 1000	1720W	33.89kg
DLP2261200	600 x 1200	2064W	40.67kg
DLP2261400	600 x 1400	2408W	47.45kg
DLP2261600	600 x 1600	2752W	54.22kg
DLP2261800	600 x 1800	2241W	61.00kg
DLP2262000	600 x 2000	3440W	64.50kg
DLP2262300	600 x 2300	3956W	77.94kg
DLP229400	900 x 400	968W	20.44kg
DLP229600	900 x 600	1452W	30.65kg
DLP229800	900 x 800	1936W	50.00kg

Fixing

Mounting: Type 21 and 22 radiators are supplied with easy-fit brackets. These can be mounted anywhere along the length of the radiator as they simply clip the top and bottom edge.

NB: Wall fixing stud position is flexible but recommend 150mm in from each end of the radiator.



* Based on 90/70/20 flow/return/environmental temperature
 ** When filled with water

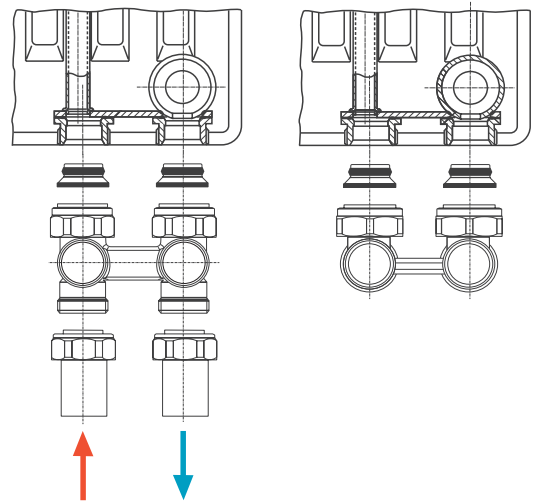
		21	22	32	33
Panel depth – excluding back supports	A	66	100	157	157
Total depth – from the back of the support to the front panel	B	66	100	166	166
Distance from the back support to the connection*	C	33	50	50	50
Distance from wall to centre of the connection (mounting the radiators on correct brackets; F7 for models 21,22,32, and 33)	D	63	85	85	85
Total distance from the wall to the front panel (mounting the radiators on correct brackets; F7 for models 21,22,32, and 33)	E	96	135	192	192

* Calculating the total size of the panel (from wall to the front panel) with the chosen wall brackets; the useful length of the chosen bracket must be added to this measurement.

Two-pipe connection

Panels with a 50mm tapping centre distributor can be connected to a two-pipe installation using a straight or square distributor. Our range of distributors are provided with Eurocone insert for connection to the 3/4" externally threaded connections. The nozzle on the distributors provided for draining the radiator can be connected to the draining device.

Product Code	Description
DLVBANG	DeLonghi Valve Block Angled
DLVBSTR	DeLonghi Valve Block Straight



Accessories



— Internal Radiator Valve
(provided separately)



— Thermostatic Head



— Valve Block - Angled



— Valve Block - Straight