

TF1 COMPACT FILTER

Designed for installation in small spaces or restricted access areas, this high performance in-line system filter uses hydrocyclonic and magnetic filtration to remove all types of contaminants from central heating system water.

- Removes system contaminants
- Unique action, removes magnetic & non-magnetic contaminants
- All valves and fittings included
- Dosing point for Fernox 'F' range products
- Will not block or restrict flow
- Ideal for use in restricted spaces and access areas
- Easy to fit - multiple orientation capability
- Fast and easy to clean without dismantling the unit
- Fits horizontal and vertical pipework
- As with all magnetic products, if you have an implanted cardiac device extra caution should be taken at all times when handling any Fernox TF1 filter

Product Specifications

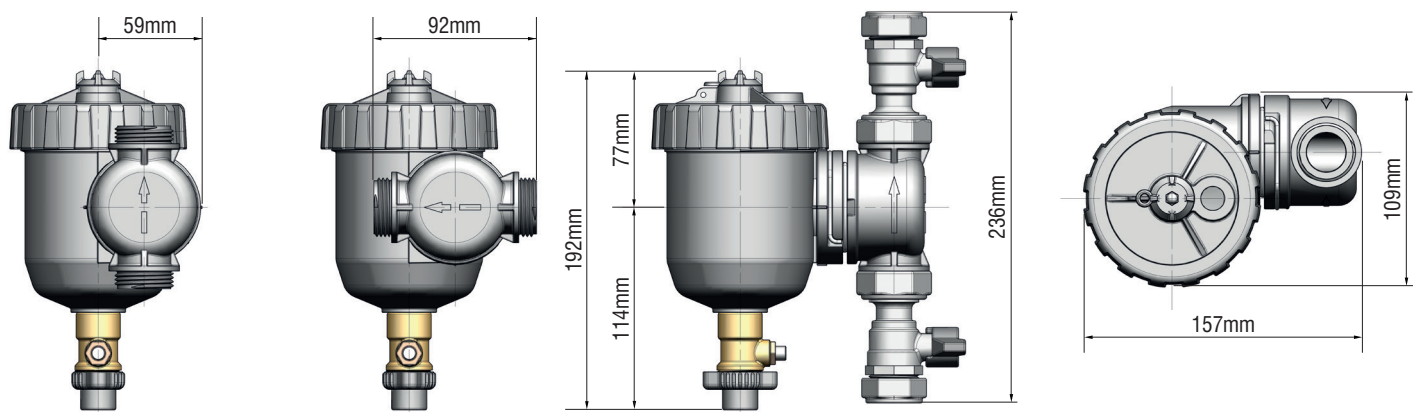
- Maximum operating temperature: 100°C
- Maximum operating pressure: 3 bar
- Maximum flow rate: 50 L/min
- Magnetic characteristics: 9000 Gauss Neodymium magnet assembly
- Body material: Glass fibre reinforced nylon plastic

Dimensions and weight

- Height: 192 mm or 7.55"
- Width: 157 mm or 6.18"
- Depth: 109 mm or 4.29"
- TF1 Compact with 22 mm valves: 1.4 kg
- TF1 Compact with 3/4" valves: 1.34 kg



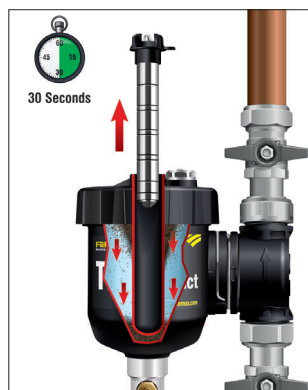
TF1 Compact Filter



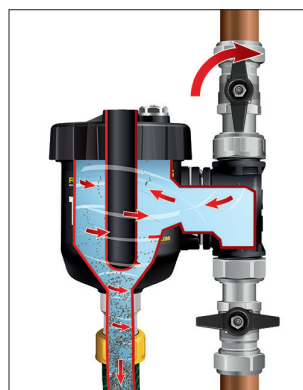
Cleaning Guide



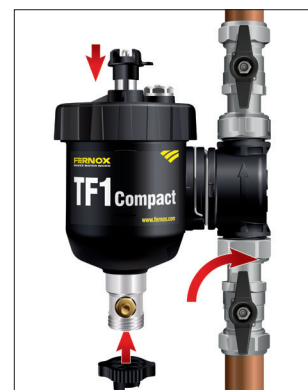
1. Close inlet and outlet valves



2. Remove magnet



3. Open outlet and drain valves



4. Close drain valve, replace magnet and open inlet valve

Inlet/Outlet Orientation Guide



1. Using a flat end screwdriver in the recess shown, gently lever the locking clip into the 'unlock' position.



2. Pull the inlet/outlet port approximately 3 mm away from the body to allow rotation to the required position.

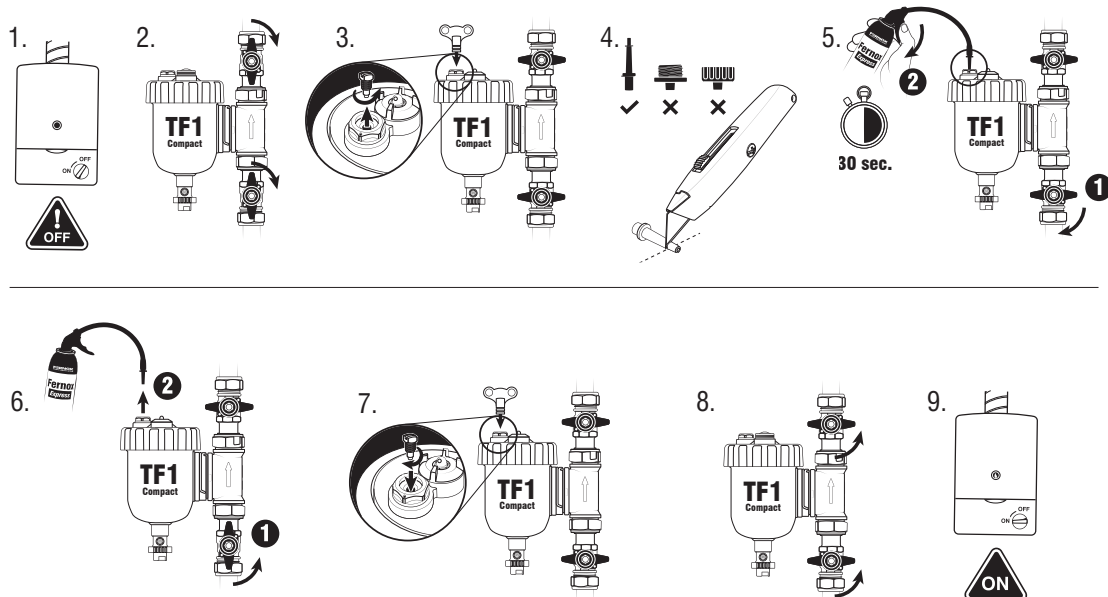


3. Push the inlet/outlet port back towards the body of the unit to prevent further rotation.



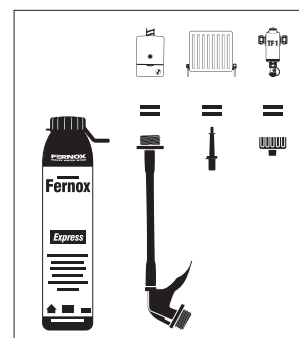
4. Push the locking clip securely back into the 'lock' position.

Dosing Guide



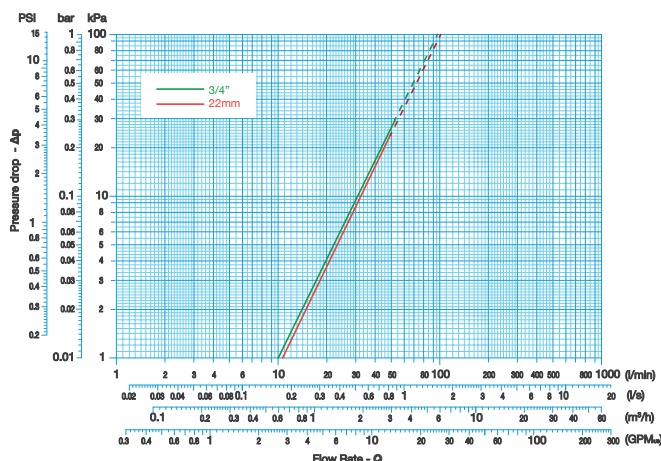
Easy dosing of FernoX Express products via a TF1 Filter with a slip socket connection.

Note: If the filter contains magnetite or sludge, flush it clean with water before dosing. Refer to the cleaning guide instructions.



Pressure Loss Data

The following information shows the pressure loss in kPa over the TF1 Compact Filter under different flow rates. An average domestic central heating system flow rate of 15L/m (0.25L/s) would result in a pressure drop over the TF1 Compact Filter of 2.0 kPa or 0.29 psi or 0.02 bar.



Application

The FernoX TF1 Compact Filter can be connected directly onto pipework using the valve fittings provided. The unit can be installed in either horizontal or vertical pipework and has been conveniently designed to be positioned flush to a wall. The TF1 Compact Filter can be installed in any one of 24 separate orientations enabled by its unique inlet/outlet mechanism, to allow the flow to be in any direction as it passes through the unit.

Product uses

The FernoX TF1 Compact Filter (UK patent granted No. 2448232) is a high performance in-line filter, which allows hydrocyclonic action to deliver contaminants to the unit's specially designed magnet assembly, removing and containing them from the system water. The FernoX TF1 Compact Filter has been developed to fit into domestic heating systems where installation access may be restricted. In situations where headroom is limited, the TF1 Compact Filter can be installed at an angle of 45 degrees without compromising performance, to allow magnet removal when cleaning the unit.

Product Codes

TF1 Compact Filter 22 mm - 62131 TF1 Compact Filter 3/4" - 62197

Packaging, Handling and Storage

Individually packaged with all valves and detailed instructions included. No special storage requirements needed.

Spare parts are available from the FernoX Sales Office by calling +44 (0) 330 100 7750